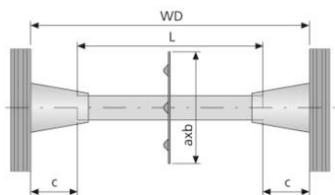


Water stop St 22 welded on



Water stop welded on Dist St-22 prevents the ingress of water. Use of FLUPP St plugs ensures that the steel tube is watertight. Conical holes can be filled with mortar or a concrete plug after removal of cones.

Calculation of tube length (L): $L = WD - 2c$

Please order tubes cut to length separately.

Applications, features, properties and benefits

Square water stops 120 x 120 offer protection against the ingress of water. Integrated studs improve bonding with concrete and resistance to torsional stress. Striking time to be observed.

Conical holes can be filled with mortar or a concrete plug after removal of cones.

Concrete cover of 35 or 50mm when used with Cone EX.

Concrete cover of 50mm when used with MKK B 15.

Article description	Plate size a mm	Plate size b mm	Packaging piece/ metre/ metre by the metre/ bucket/ bag/ bundle/ box/ can	Weight kg/piece
10290311	120	120	1 piece	0,320