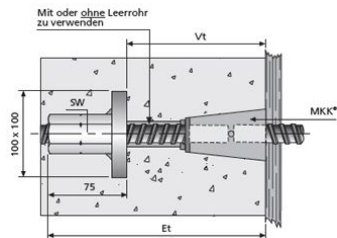
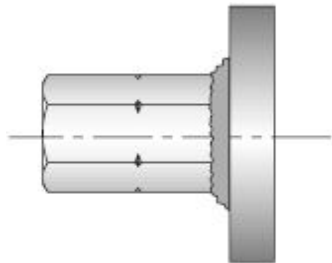


## End anchorage B 20



Made from an anchor plate with welded-on B 20 hexagon nut. For one-sided anchoring. Compatible with Uni 20.

Vt = Anchoring depth

Et = Installed depth

Anchoring depth: Vt = 175 mm

(Acc. to test certificate, failing load in concrete 177 kN and concrete quality C20/25)

Failing load in concrete:

235 kN in uncracked concrete

177 kN / 181 kN in cracked concrete

(test cone dia. restricted to 850 mm)

Concrete strength: 30 N / mm<sup>2</sup>

Max. load depends on the concrete quality and anchoring depth (Vt)

Article description	Title of variant	Packaging piece/ metre/ metre by the metre/ bucket/ bag/ bundle/ box/ can	Weight kg/piece
14580100	End anchorage B 20	1 piece	1,560