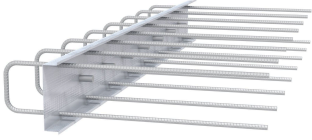


## COMAX<sup>®</sup> X - standard types, shear force parallel to the joint

Shear force applied parallel to lift joint  
Formulas and tables



### Applications, features, properties and benefits

Benefits:

Standard length 1.25 m

Toothing in transverse direction for optimal force transmission

COMAX<sup>®</sup> L for exposure to longitudinal shear forces parallel to the joint

Significant advantages for planners:

acc. to DIN 1045-1 the COMAX<sup>®</sup> L is classed as "TOOTHED"

Dimensionally stable cover facilitates short striking times

Special types (except K and BK) available on request

### Technical data

Agenda:

B = Typ/Blechbreite/Elementbreite

l = Verankerungslänge

b = Bügelbreite

h = Bügelhöhe

e = Bügelabstand

## COMAX® X - standard types, shear force parallel to the joint

Article description	Typ/ Blechbreite mm	BSt Ø mm	Bracket spacing e in cm	b1 cm	h cm	l cm	Packaging piece/pallet
52110815	X110	8	15	8	15	32	80 Stück/Palette = 96 m
52241220		12	20	15	21	46	48 Stück/Palette
52110820	X110	8	20	8	15	32	80 pieces/pallet
54111015	X110	10	15	8	15	39	80 pieces/pallet
52111020	X110	10	20	8	15	39	80 pieces/pallet
52140815	X140	8	15	11	15	32	80 pieces/pallet = 100m
52140820	X140	8	20	11	15	32	80 pieces/pallet
52141010	X140	10	10	11	15	39	108 Stück/Palette
52141015	X140	10	15	11	15	39	80 pieces/pallet
52141020	X140	10	20	11	15	39	80 pieces/pallet
52141215	X140	12	15	11	15	46	80 pieces/pallet
52141220	X140	12	20	11	15	46	80 pieces/pallet
52160815	X160	8	15	13	15	32	60 pieces/pallet = 75m
52160820	X160	8	20	13	15	32	60 pieces/pallet
52161010	X160	10	10	13	15	39	84 Stück/Palette
52161015	X160	10	15	13	15	39	60 pieces/pallet
52161020	X160	10	20	13	15	39	60 pieces/pallet
52161215	X160	12	15	13	15	46	60 pieces/pallet
52161220	X160	12	20	13	15	46	60 pieces/pallet
52190815	X190	8	15	16	15	32	60 pieces/pallet = 75m
52190820	X190	8	20	16	15	32	60 pieces/pallet
52191010	X190	10	10	16	15	39	72 Stück/Palette
52191015	X190	10	15	16	15	39	60 pieces/pallet
52191020	X190	10	20	16	15	39	60 pieces/pallet
52191215	X190	12	15	16	15	46	60 pieces/pallet
52191220	X190	12	20	16	15	46	60 pieces/pallet
52220815	X220	8	15	19	15	32	48 pieces/pallet = 60m
52220820	X220	8	20	19	15	32	48 pieces/pallet
52221010	X220	10	10	19	15	39	48 Stück/Palette
52221015	X220	10	15	19	15	39	48 pieces/pallet
52221020	X220	10	20	19	15	39	48 pieces/pallet
52221215	X220	12	15	19	15	46	48 pieces/pallet
52221220	X220	12	20	19	15	46	48 pieces/pallet
52240815	X240	8	15	21	15	32	40 pieces/pallet = 50m
52240820	X240	8	20	21	15	32	40 pieces/pallet
52241010	X240	10	10	21	15	39	48 Stück/Palette
52241015	X240	10	15	21	15	39	40 pieces/pallet
52241210	X240	12	10	21	15	32	40 pieces/pallet

## COMAX<sup>®</sup> X - standard types, shear force parallel to the joint

Article description	Typ/ Blechbreite mm	BSt Ø mm	Bracket spacing e in cm	b1 cm	h cm	l cm	Packaging piece/pallet
52241215	X240	12	15	21	15	46	40 pieces/pallet