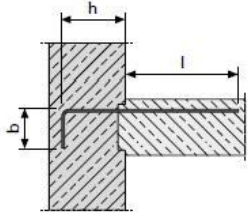


Type WS - angle with lateral hook - 0Type WS 2-row - double angle with lateral hook

Typ WS Winkel mit seitlichen Haken



Type WS / WS 2-row

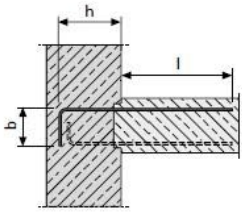
Angle with lateral hooks, double-section as double angle (-hooks) also available with different steel diameters.

Technical data

The values e , b , h and l are variable depending on the element width, sheet type and BSt \emptyset . The anchoring length applies only to single-row elements with standard perforation.

Subject to technical changes. The dimensions as well as the combination of the maximum values must be agreed in each individual case. Listed are design examples.

Typ WS - 2reihig Doppelwinkel mit seitlichen Haken



Type WS - angle with lateral hook - 0Type WS 2-row - double angle with lateral hook

Element width mm	Sheet type P	BSt Ø mm	Bracket spacing e in cm	Bracket spacing b in cm	Bracket height h in cm	Anchoring length for element length 83 cm l in cm	Anchoring length for panel length 125 cm l in cm
60	P	8	10	8	8 - 98	max. 41	max. 39
60	P	8	15	8	8 - 98	max. 45	max. 67
60	P	8	20	8	8 - 98	max. 49	max. 69
60	P	10	10	8	10 - 98	max. 31	max. 31
60	P	10	15	8	10 - 98	max. 44	max. 46
60	P	10	20	8	10 - 98	max. 48	max. 58
60	P	12	10	8	12 - 98	max. 23	max. 23
60	P	12	15	8	12 - 98	max. 35	max. 35
60	P	12	20	8	12 - 98	max. 48	max. 51
80	P	8	10	8	8 - 98	max. 43	max. 64
80	P	8	15	8	8 - 98	max. 45	max. 67
80	P	8	20	8	8 - 98	max. 49	max. 70
80	P	10	10	8	10 - 98	max. 42	max. 45
80	P	10	15	8	10 - 98	max. 45	max. 65
80	P	10	20	8	10 - 98	max. 47	max. 68
80	P	12	10	8	12 - 98	max. 38	max. 38
80	P	12	15	8	12 - 98	max. 42	max. 58
80	P	12	20	8	12 - 98	max. 48	max. 67
110	P/Q/L	8	10	8	8 - 98	max. 44	max. 64
110	P/Q/L	8	15	8	8 - 98	max. 46	max. 67
110	P/Q/L	8	20	8	8 - 98	max. 49	max. 70
110	P/Q/L	10	10	8	10 - 98	max. 43	max. 63
110	P/Q/L	10	15	8	10 - 98	max. 44	max. 66
110	P/Q/L	10	20	8	10 - 98	max. 48	max. 69
110	P/Q/L	12	10	8	12 - 98	max. 43	max. 53,5
110	P/Q/L	12	15	8	12 - 98	max. 44	max. 66
110	P/Q/L	12	20	8	12 - 98	max. 48	max. 69