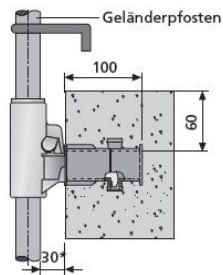


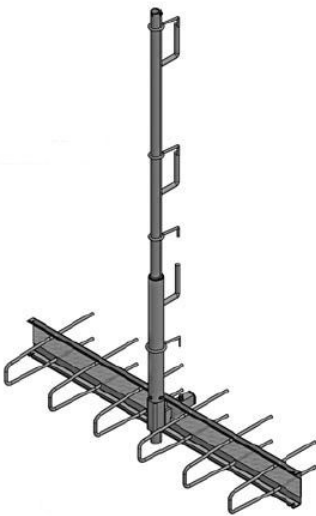
Plug



* Vergrößerung durch Verlängerungsstück auf Anfrage.



**Stecker-Hülse vormontiert im COMAX®



Railing post holder for holding the BETOMAX® railing post on the edges of ceilings and bridge superstructures made of concrete in conjunction with the plug socket that was concreted in beforehand.

Applications, features, properties and benefits

Properties, advantages:

Simple assembly of the plug sleeve on the inside of the edge formwork
 Snapping the plug into the sleeve after stripping or before installing the fall protection
 No hindrances to subsequent trades, e.g. B. Sealing work by lateral anchoring
 The cover prevents the ingress of concrete during the concreting process

Comment to article

Rental of plugs and plug extensions on request.

Plug-socket pre-assembled in the COMAX® rebar connection on request.

Article description	Title of variant	Packaging piece/ metre/ metre by the metre/ bucket/ bag/ bundle/ box/ can	Weight kg/piece
35637000	Plug	25 pieces	1,010
35640000	Plug sleeve	25 pieces	0,040
35641101	Cover for plug sleeve self-adhesive	50 pieces	0,055
35637115	Plug extension	25 pieces	1,900